

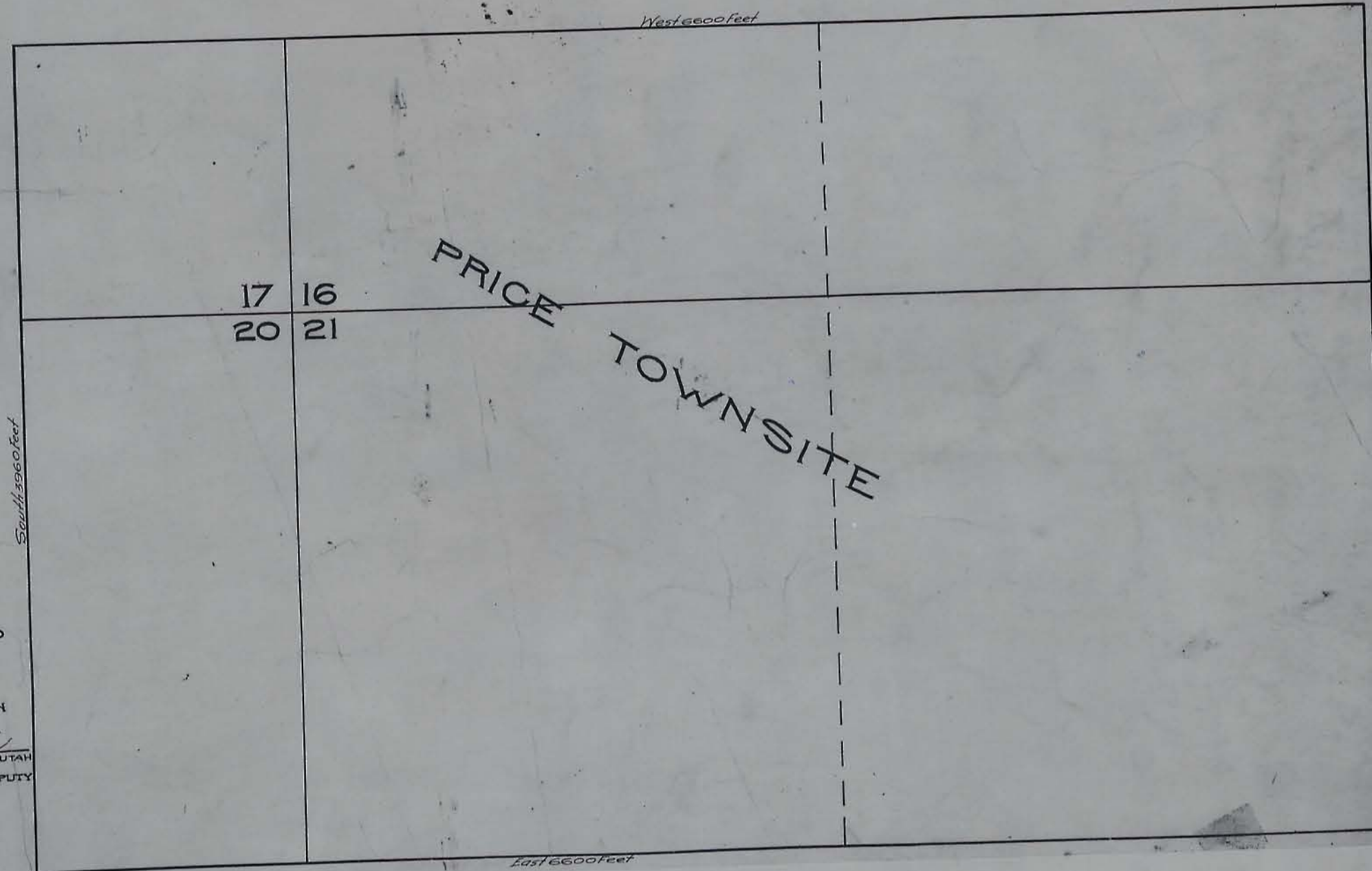
SURVEYORS CERTIFICATE
 I, R. J. Turner, Surveyor General for the State of Utah, do hereby certify that this plot is a true representation of the boundaries of Price Townsite - Utah, as shown on Nov 29th 1910 and was drawn to scale by myself from official notes on file.

R. J. Turner
 Surveyor General

Subscribed and sworn to before me this 29th day of Nov 1910.

[Signature]
 County Clerk

EXHIBIT A
 SHOWING BOUNDRIES OF
 PRICE TOWNSITE ON NOV 29 1910
 IN SECTIONS 16-17-20-21 TWP. 14. S.
 RANGE 10. E S.L.M.
 SCALE 1"=400'



FILED FOR RECORD
 4 O'clock P.M.
 March 6th 1911
 AND RECORDED IN
 Book 1-A PAGE 2
W. L. [Signature]
 RECORDER CARBON COUNTY
 BY *J. [Signature]* DEPUTY